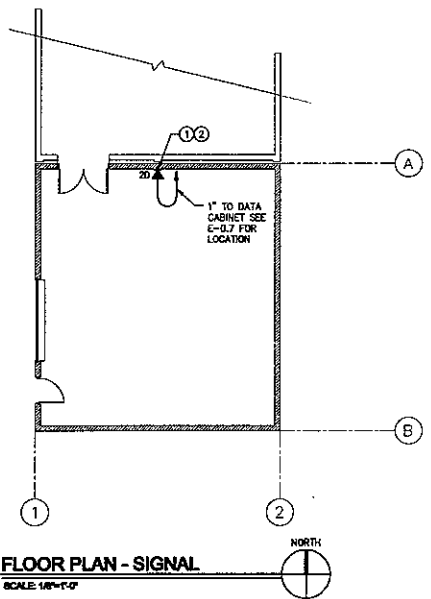
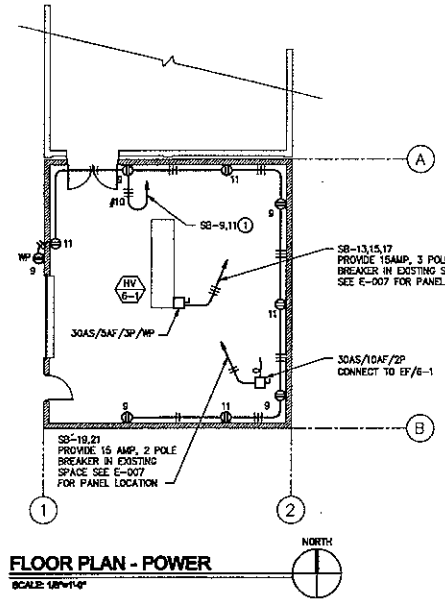


**LIGHTING PLAN KEYNOTES**  
① CONNECT TO SPARE BREAKER IN PANEL 'SB'. SEE SHEET E-007 FOR PANEL LOCATION.

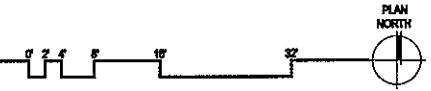


**SIGNAL PLAN KEYNOTES**  
① SEE A/ET-5.2 AND B/ET-5.2 FOR LABELING DETAILS.  
② TERMINATE VOICE/DATA CABLES AT EXISTING DATA CABINET IN PRODUCTION BUILDING.



**POWER PLAN KEYNOTES**  
① CONNECT TO SPARE BREAKER IN PANEL 'SB'. SEE SHEET E-007 FOR PANEL LOCATION.

**PRODUCTION WORKSHOP EXPANSION PLANS**



**VERIFY SCALE**  
BAR IS ONE INCH ON ORIGINAL DRAWING.  
IF NOT ONE INCH ON THIS SHEET, ADJUST SCALES ACCORDINGLY.

**TURPIN & RATTAN**  
ENGINEERING, INC.  
4713 PALM AVENUE  
LA BREA, CA 91031-0883  
610 / 468 / 8888 FAX 468 / 6888  
E-MAIL: ENR@TRINC.COM  
TEL: 07180.00

**Underground Service Alert**  
Call TOLL FREE  
1-800-422-4133  
TWO WORKING DAYS BEFORE YOU DIG

REVISIONS					
REV.	DATE	BY	DESCRIPTION	APPROVED	DATE

*Richard Bandy, Jr., Architect*  
710 S. Main Street, Suite 100, Huntington Beach, CA 92648  
TEL: 714.833.1111 FAX: 714.833.1112

PREPARED UNDER THE SUPERVISION OF:  
*Michael J. Pappas* 7/10/09  
DATE: 7/10/09  
PRINCIPAL CIVIL ENGINEER  
R.C.E. NO. 00374

**CITY OF HUNTINGTON BEACH**  
DEPARTMENT OF PUBLIC WORKS

**CITY OF HUNTINGTON BEACH**  
UTILITIES OPERATIONS YARD UPGRADE  
LIGHTING POWER AND SIGNAL PLANS

DWG NO.  
197  
OF  
214  
6E-1.1